



COMMANDER 900

MOST POWERFUL BACKPACK

- European Made DOMEL High Efficiency Motor
- Anti-Vibration Absorbers(AVA) (Patented)
- Professional Grade HEPA 13 Exhaust Filter
- Large 5.5L Dust Bin & Patented Vortex Filter Chamber
- Blower Port(Patented)
- Flexible Cord Restraint(Patented)
- Soft Rubber Bumper

Engineered & Designed
Specifically for Commercial Cleaners

Customer Service: 1800 815 270 Australia
(09)263 7573 New Zealand



6

21

9

19

12



3

15

17

14

20

1

16

8

13

4

7

5

18

2

2

Commander 900

Congratulations on the purchase of your new Pullman Advance Backpack vacuum cleaner Commander 900. Your Pullman Advance Backpack has been manufactured to the highest quality and performance standards. We recommend that you read these instructions carefully to ensure peak cleaning performance and to extend the life of the Backpack.

Features:

1. On/Off button & variable suction control
2. Cable restraint
3. Flexible hose
4. Upper back frame & height adjustment
5. Shoulder straps
6. 2-Piece aluminum rod
7. Carry handle
8. Exhaust filter grill
9. Cloth filter bag
10. Pre-Motor sponge filter (not shown)
11. Motor exhaust HEPA filter (not shown)
12. Patented Vortex HEPA Filter Chamber
13. Powerhead outlet
14. Hose handle holder
15. Dust bin lid latch
16. Blower port
17. Suction Relief Valve
18. Anti-Vibration Absorbers(AVA) Patented

Accessories:

19. Long Crevice Tool
20. Gulper Advance Floor Tool with Patented Ball Bearings
21. Paper Bag (5pcs)

Specifications:

Motor: Flow Through Domel Motor

Air Watt:

355Watt (Turbo); 235Watt (Eco)

Air Flow:

51L/s (Turbo); 44L/s (Eco)

Suction Power: 23.6Kpa

Input Power:

1250W - European Motor High Efficiency

Sound Level at Ear Level:

72.5dBa (Turbo);

68.6dBa (Eco)

Filtration:

Paper bag; Cloth bag; Patented Vortex HEPA Filter Chamber; Motor inlet mesh filter; HEPA 13 exhaust filter.

Cord Length: 18m

Rod: 35mm system 2 pcs aluminium rods

Hose: 1.2m(with strain relief on both ends)

Floor Tool: Ball Bearings Gulper Advance

Floor Tool Accessories: Long Crevice Tool

Blowing Function: Blower port

Barrel Dimension:

250mm(depth) x 230mm(diameter)

Net Weight: 5.4Kg

For customer service or product enquiries please contact 1800 815 270 (Australia)

(09)263 7573 (New Zealand) 3

FEATURES

<p>Large 5.5L Dust Bin & Patented Vortex Filter Chamber</p>	<p>The patented vortex filter chamber design removes the need for a filter cone, thus providing full use of the dust storage capacity, perfect for cleaning large areas efficiently.</p>
<p>Blower Port (Patented)</p>	<p>This handy blower port at the front of your Commander 900 easily transforms your backpack vacuum into a blower.</p>
<p>Flexible Cord Restraint</p>	<p>Prevents and protects the extension power cord from disconnecting.</p>
<p>European Made DOMEL High Efficiency Motor</p>	<p>Superior European made high efficiency motor is significantly quieter than other leading brands. With two operating modes; ECO and TURBO it can operate at optimum levels regardless of floor type. Never compromising performance or suction, the high efficiency motor out performs other leading brands, picking up more embedded dirt, plus the high efficiency flow from the motor uses less energy than other brands.</p>
<p>Anti-Vibration Absorbers</p>	<p>(AVA) (Patented) The world's ONLY backpack with patented Anti-Vibration Absorbers (AVA) which eliminate the transfer of motor vibrations through the harness and to your back.</p>
<p>Professional Grade HEPA 13 Exhaust Filter</p>	<p>Ensures that the dirt and dust captured is contained inside the vacuum cleaner, while releasing 99.95% pure air back into your environment.</p>
<p>35mm system</p>	<p>Enhanced Air Flow System maximizes air flow whilst minimising blockages.</p>

Patented Easy Adjustable Harness	Hiking quality designed and supported with fully adjustable shoulder straps and 3 level height adjustment, the perfect fit for every user.
3 Stage Height Adjust Ergonomic back frame	provides a comfortable fit that sits away from the users back and carries even weight distribution causing less stress on the user. Suits small, medium, or tall frames.
Patented Active Air Ventilation System (AAVA)	Innovative patented design combined with airflow cool mesh technology removes hot air away from your back for enhanced comfort. The breathable harness mesh allows air to flow through, removing moisture away from the body.
Comfort Support System	Vibration free harness with cushioning support inserts to ensure weight is correctly centered on your hips.
Convenient Tool Belt Eyelets	on this handy utility belt allow the user to hang all accessories for easy access during operation. A hook for the power cord makes cleaning even easier.
Dual Speed performance	ECO Mode for quiet cleaning and TURBO Mode for heavy duty cleaning & blowing.

Patented And Design Registered.

1. BEFORE YOU BEGIN

Before you start using your new Backpack you should read this instruction booklet carefully and make sure that you have understood its contents. If not, please contact the store where you purchased your Backpack or call customer service

1800 815 270 (Australia)

(09)263 7573 (New Zealand)

Precautionary measures:

In the event that your Backpack should become blocked, please switch Off and remove the plug from the Mains power point before you attempt to remove the blockage.



1. Do not operate the vacuum cleaner too close to heaters, radiators, cigarette butts etc.



2. Before you insert the plug into the mains power supply, make sure your hand is dry.



3. Before you start using the Backpack, please remove large or sharp objects from the floor in order to prevent the paper filter being damaged.



4. When you remove the plug from the Mains power supply, please do this at the plug itself and not by the electrical cable.



5. Do **not** use Backpack to pick up water or liquids.

This backpack is equipped with a cable restraint, cord and plug. In the event that either of these parts become damaged, it must be repaired by a qualified technician.

2. WARNING

Important

Always switch Off the Backpack and remove the plug from the electricity power supply before cleaning your appliance, when not in use or attempting any maintenance task. The Backpack must only be connected to an AC power supply at the voltage shown on the rating label. This Backpack should only be used for its intended purpose as described in this instruction manual. Never operate the Backpack without filters.

Safety precautions and warning:

When using your Backpack, basic precautions should always be observed, including the followings;

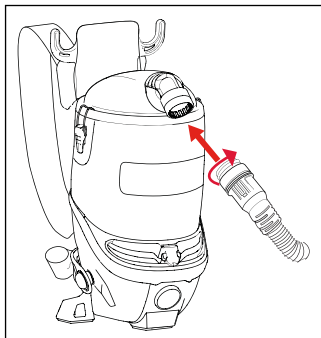
1. This appliance is not intended for use by persons (including children) with reduced physical, sensory or mental capabilities or lack of experience and knowledge, unless they have been given supervision or instruction concerning use of the appliance by a person responsible for their safety.
 2. Children should be supervised to ensure that they do not play with the appliance.
 3. To prevent electrical shock, do not immerse the appliance, power cord or power plug into water or other liquids.
 4. To prevent electrical shock, do not use the vacuum cleaner outdoors or on wet surfaces.
 5. Always check the power cord before use, the power cord and the plug should be in a good condition and must not be damaged. If the power supply cord is damaged or defective, it must be replaced by the manufacturer or its service agent.
- Please contact Customer Care:
1800 815 270 (Australia)
(09)263 7573 (New Zealand)
customerservice@godfreys.com.au for service enquires.
6. Do not unplug by pulling on the power cord. To unplug, grasp the plug not the power cord. Use only Australian and New Zealand electrical safety approved extension cords.
 7. Do not pull or carry the appliance by the power cable, use the power cable as a handle or pull the power cable around shaft edges or corners. Avoid running the appliance over the power cable.
 8. Ensure the appliance is switched off before unplugging.
 9. Do not handle or operate the appliance with wet hands and follow electrical safety precautions at all times.
 10. Extreme caution should be exercised when using the appliance on stairs.
 11. Do not attempt to change the attachments while the appliance is plugged in to Mains power supply. Switch off and remove plug from Mains power supply. Use only manufacturer's recommended accessories.
 12. Do not operate the vacuum cleaner too close to the heaters, radiators and other hot surfaces.
 13. Do not use the appliance to pick up flammable items or combustible liquids (i.e. petrol, hot ashes cigarettes, matches, explosive materials or anything burning) or use in areas where such substances and items may be present.

2. WARNING (CONTINUED)

14. Do not use the appliance to pick up toxic materials (i.e. chlorine bleach, ammonia).
15. Ensure the appliance is disconnected from the Mains power supply before connecting the hose to the unit.
16. Do not operate or use the appliance without the dust bag and/or filters in place.
17. Before vacuuming, remove any large or shaft objects from the floor or cleaning surface in order to prevent damage to the filter.
18. If the air inlet, floor head or the 2-piece rod is blocked, switch off the cleaner straight away and remove from the Mains power. First clear the blocked object before attempting to start the cleaner vacuum again.
19. Do not leave the appliance unattended when it is connected to a Mains power supply.
20. Before carry out any maintenance service or cleaning the filters, always switch off the vacuum cleaner and disconnect the plug from power supply.
21. Keep ends of the hose, 2-piece rod and other openings away from your face and body.
22. Do not use the vacuum cleaner if it is damaged or breaks down. Check the electrical regularly for defects. If connection cables, electrical hoses, electrical contacts and electric tubes are damaged, have them replace immediately.
23. Never clean the vacuum cleaner or any of the electrical parts, especially the electrical connections with water or liquid cleaners.
24. Never attempt to make any modifications electrically to the vacuum cleaner.
25. Always store the appliance indoors in a cool and dry place.
26. Do not pickup water, dry use only.
27. Damage caused by improper use or by not observing the instructions in this manual will void warranty.
28. This appliance must be grounded. If it should malfunction or breakdown, grounding provides a path of least resistance for the electric current to flow, this will reduce and prevent the risk of electric shock. This appliance is equipped with a cord having an equipment-grounding conductor and grounding plug. The plug must be inserted into an appropriate outlet that is properly installed and grounded in accordance with all local codes and ordinances.

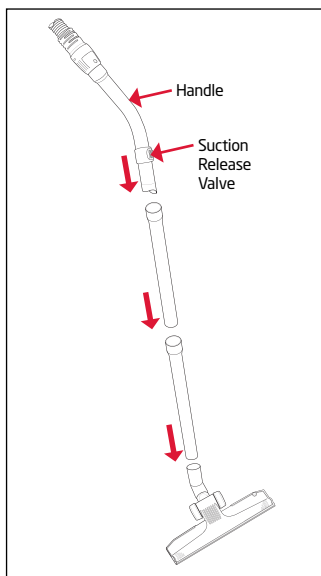
3. ASSEMBLY

Always switch Off your Backpack and remove the plug from the Mains power point before cleaning your appliance, assembling, when not in use or attempting any maintenance task.



Connecting the hose

1. To fit the hose, insert into the hose inlet at the top of the backpack. Turn the hose end clockwise until it locks into place.
2. To remove the hose, twist the hose end counter clockwise until it loosens.



Fitting the 2-piece rod and floor tool

1. Connect the 2-piece rod together. To fit the rod to the handle, gently insert the end of the handle into the top of the rod.
2. To fit the floor tool to the rod, gently insert the rod into the top of the floor tool as shown .

3. ASSEMBLY (CONTINUED)



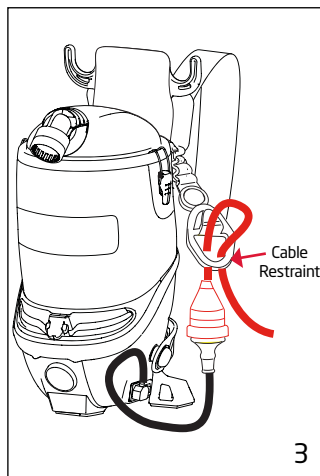
The Patented Gulper Advance floor tool is ideal for cleaning on carpets and hard floors.

Accessory

Crevice Tool - ideal for cleaning in tight spaces

Cable Restraint

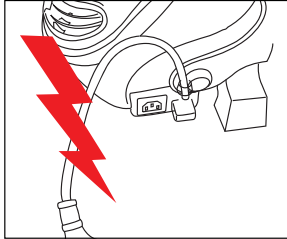
IMPORTANT - Ensure extension cord is fitted to the restraint correctly



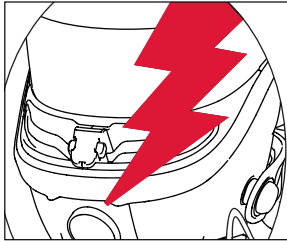
1. Connect extension cord to the Cable Restraint on the Backpack. (Make a loop at 40cm on the extension cord)
2. Feed the loop up through Cable Restraint opening.
3. Place extension cord over the top of the Cable Restraint hook. Pull down on the extension cord to lock the cord onto the hook.
4. Pull down on the extension cord firmly to ensure the cord does not slip.

4. INSTRUCTIONS FOR USE

IMPORTANT



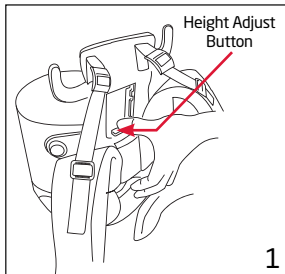
Do not use your Backpack if the power cord is damaged, or there are exposed internal wires.



Do not use your Backpack if the motor housing is damaged.

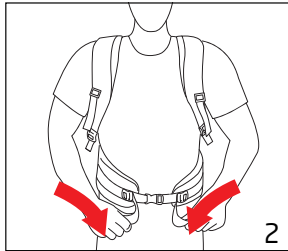
Fitting Your Backpack

Your Backpack comes with straps fastened for ease of packing. Before fitting the Backpack onto your back, first loosen the various harness straps.

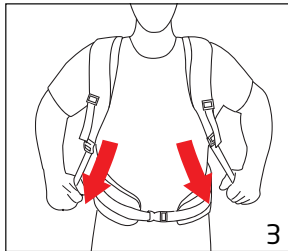


1. Adjust harness height to your body height by squeezing & sliding the Height Adjust Plate (up or down) to your appropriate height. (Tall, Medium or Small)

4. INSTRUCTIONS FOR USE (CONTINUED)



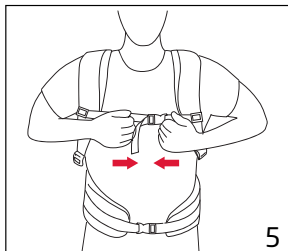
2. Place arms through Harness. Buckle the Hip belt ensuring backpack is resting on your hip bone & tighten by pulling both Hip belt side straps.



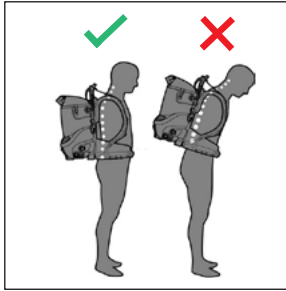
3. Tighten Shoulder Straps by pulling down on the end of the 2 straps.



4. Next pull down on the 2 Load Lifter Straps.



5. Lastly buckle the Sternum Strap across your chest.



IMPORTANT

The unit is ergonomically correct when the weight is distributed over the waist and not on the shoulders.

Operating Your Backpack



IMPORTANT

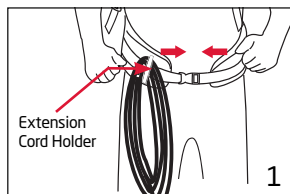
For everyday use, always operate your Backpack in the Turbo (high) mode. This improves the cyclonic action in the bag chamber.

1. Your Backpack needs to be used with an extension cord. Fit the extension cord to the Cable Restraint correctly as per the cable restraint instruction.(please refer page 10 Cable Restraint) Connect the extension cord to the mains power supply.
2. Fit the unit onto your back (Please refer page 12 Fitting Instructions).
3. To switch on the Backpack, reach back with your left hand to the lower side of the unit and press the On/Off switch.(Press up for Eco (low). Press down for Turbo (high). Press middle for Off.
4. The Power Head outlet (located next to the power inlet socket). This outlet can be used to connect a powerhead.
5. There are 2 power modes, Eco and Turbo. "Eco" for upholstery cleaning. "Turbo" for everyday use.

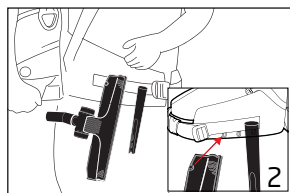
4. INSTRUCTIONS FOR USE (CONTINUED)

Using Cord Holder Strap and Accessories Hook

In between jobs, the extension cord and accessories can be temporary stored on the waist strap.

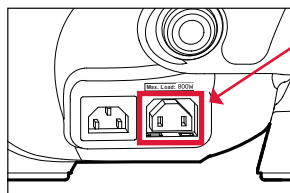


1. First buckle up the hip belt. The extension cord can be secured on the hip belt (right side), in the strap with the buckle clip.



2. For convenience, secure each of the Gulper Advance Floor Tool and the Crevice Tool into a fabric eyelet hook provided on the belt.

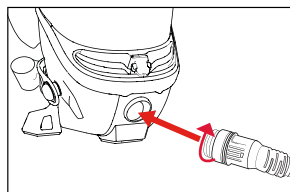
Using the Powerhead*



The Power Head Outlet is designed for use with an electrically approved motorised power head. The maximum wattage of the power head must **not** exceed 800 watts.

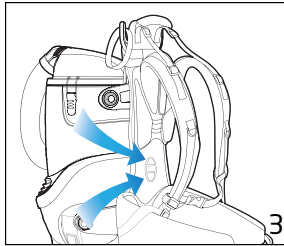
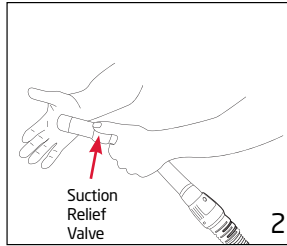
* Power Head is not included.

Using Blower Port



Insert the hose into the blower port. Turn the hose end clockwise until it locks into place.

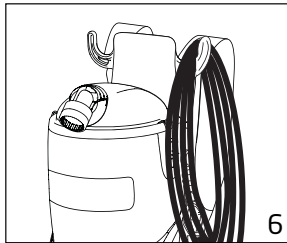
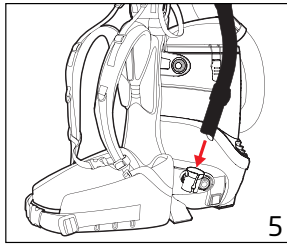
Using the Active Air Relief System



The Active Air Relief System removes hot air away from your back for enhanced comfort while using your Backpack.

1. Press the On/Off switch down to Turbo Mode.
2. Close off the Suction Relief Valve.
3. Block nozzle with your hand and this will open the Active Air Relief System to draw fresh cool air in around your lower back.

Taking Off Your Backpack



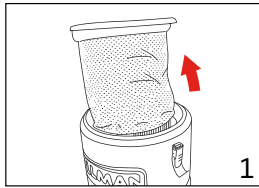
1. To switch the Backpack Off, press the On/Off switch to the middle.
2. Unclip waist strap and chest strap.
3. Loosen shoulder straps slightly. Slide pad off one shoulder and then off the other shoulder - taking hold off the carry handle on the top of the Backpack.
4. Turn off at the Mains power and remove plug from the Mains Power.
5. Store the hose handle end into the onboard tool holder.
6. Loop the extension cord together and secure it onto the cord hook, securing it firmly by the Velcro strap attached to the cord hook.

5. MAINTENANCE

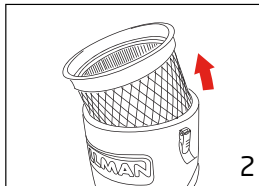
WARNING!

Before any Maintenance and Cleaning - ensure your Backpack is turned Off and the extension cord is disconnected from the Mains power supply.

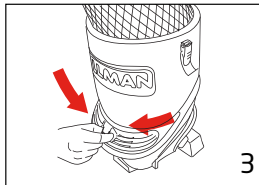
Always operate your Backpack with the Patented Vortex HEPA Filter Chamber and the cloth filter bag correctly installed. This will prevent damage to your Backpack and help maximize cleaning performance.



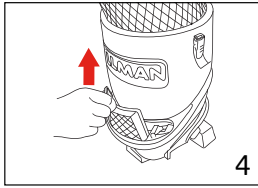
1. Remove the clear lid. Lift out cloth dust bag to empty.



2. Next, remove the Patented Filter drum & tap gently to clean.



3. Squeeze the two HEPA filter grill tabs & remove the grill.



4. Pull up the exhaust HEPA filter, and tap the HEPA filter to clean.

For maximum performance replace the Cloth Filter Bag every 3 months.

We recommend the both the HEPA filter and the Patented Vortex HEPA Filter Chamber are replaced at time of service - 6 monthly.

6. TROUBLESHOOTING

Problems and solution

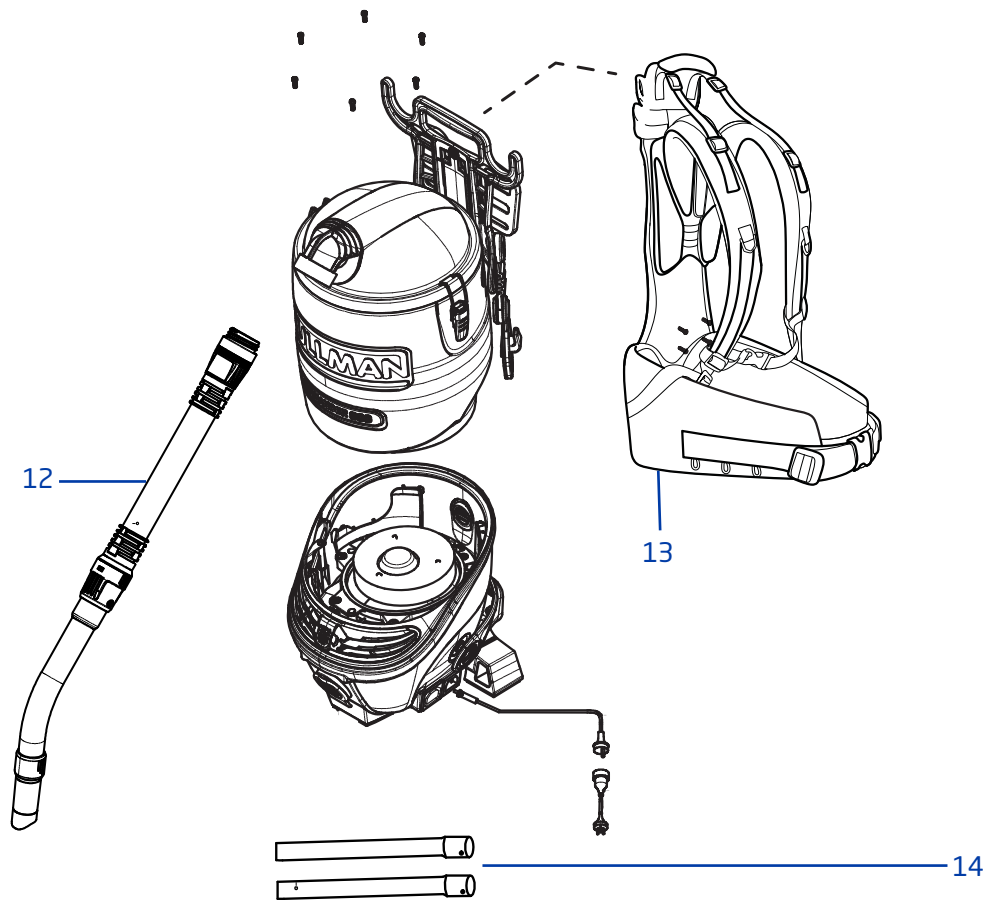
If you come across a problem, please use this checklist for trouble shooting tips.

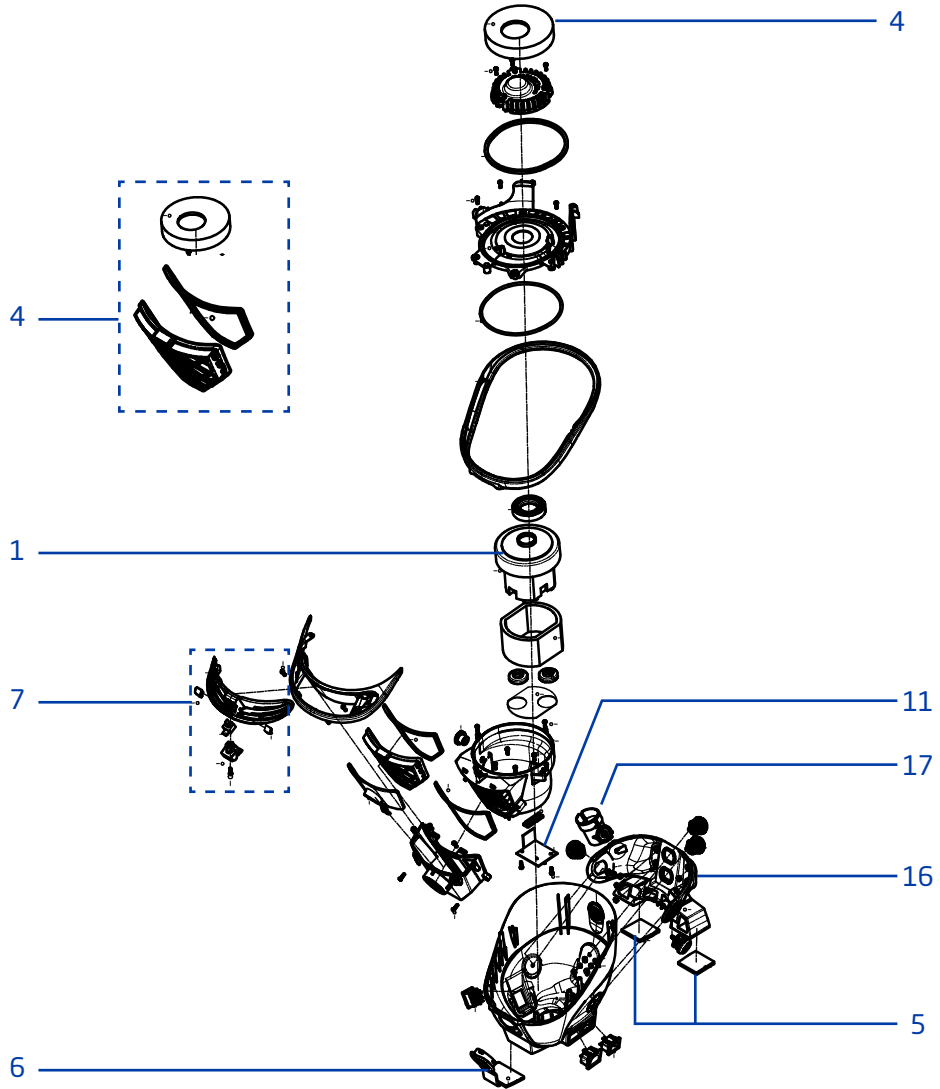
Should you still need help, please ring Pullman Customer Care 1800 815 270 (Australia)

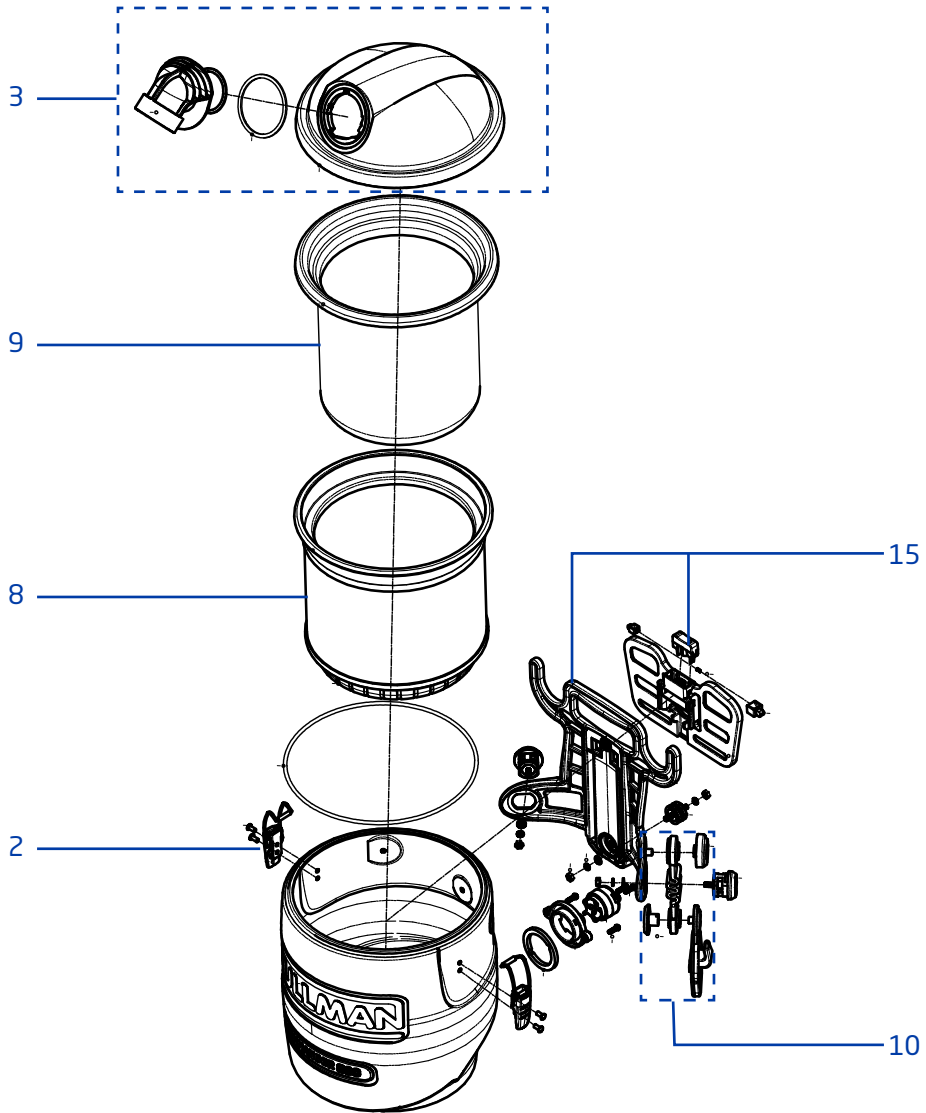
(09)263 7573 (New Zealand)

Fault	Treatment
The backpack vacuum cleaner will not turn "On".	Check that the extension cord is inserted securely; remove the power plug and then reinsert into the Mains power supply. Check that the On/Off switch is in the 'ON' position.
The Backpack vacuum performance is deteriorating.	Check the Backpack to ensure there are no blockages. Please clear any blockages that may be found. (Important: always first remove the plug from the Mains power point). Check the cloth filter bag (inlet and exhaust) to see if it needs to be cleaned or replaced.
The cleaner makes an abnormal sound when switched on.	Check the backpack to ensure there are no blockages. Please clear any blockages that may be found. (Important: always first remove the plug from the Mains power point).
The cleaner has no suction, it turns off after a few minutes and not able to turn back on.	Check for any blockage in the hose, rod, floor tool restricting the airflow. Remove blockage and allow approximately 30-60 minutes for the motor to cool down before it can be used again. (Important: always first remove the plug from the Mains power point).

7. EXPLODED VIEW







Number	Part Description	Part Number
1	Motor	34400222
2	Latch, dust bin lid	33600187
3	Lid assembly complete	33155189
4	Filter, set, exhaust, motor inlet	32201322
5	Pad, pair, rubber foot	31400219
6	Cap, blower	31155135
7	Grill cover	33155193
8	Vortex HEPA Filter Chamber	32201325
9	Cloth Filter Bag	32440414
10	Cable Restraint	33155198
11	Main PCB board	33201331
12	Hose assembly complete	31220753
13	Strap & Harness Assembly complete	33788029
14	Rod, 35mm aluminium 2pcs	31300730
15	Upper bracket with height adjustment	33788030
16	Lower bracket	33788035
17	Hose handle with suction relief valve	33155202
Not shown	Paper bag 5 pcs	32440416

Conditions of warranty



This warranty commences from the original date of purchase and is not transferable; please retain your original proof of purchase for any warranty claims. This warranty is valid only in the country where the cleaner is purchased.

The cleaner must be operated in accordance with these instructions. This cleaner is not designed for the collection of vitreous building material including particle board, construction products and similar products such as wood/fibres, cement, fillers, fibre glass etc or excessive or frequent sand. The infrequent pick-up of these materials in these circumstances may be harmful to your cleaner and may void the manufacturer's warranty.

Tools, accessories and consumables including dust bags and filters, unless defective in manufacture, are not subject to this warranty. In order to prolong the life of accessories and consumables, regular care and maintenance is recommended.

When properly used and cared for, your cleaner will render excellent service; refer to the instruction manual for further details, as misuse or failure to follow the instructions makes this warranty void.

In the event of service or advice being needed, please contact Electrical Home-Aids Pty Ltd, Ground Level, Building 3 Brandon Business Park, 530 Springvale Road, Glen Waverley Victoria 3150, or on 1300 360 845, Monday-Friday 9am-5pm EST. The decision to repair or replace the cleaner is at the sole discretion of Hoover Floorcare. If Electrical Home-Aids Pty Ltd decide to repair or replace the cleaner, it will do so at its own cost.

Electrical Home-Aids Pty Ltd is unable to accept responsibility under this warranty for any repair work not carried out by an authorised Pullman Service Agent or from the use of non-genuine parts. If any part is no longer available or manufactured, Electrical Home-Aids Pty Ltd will replace it with a genuine functional replacement part. This warranty does not apply to the cost of replacing any parts of the product due to normal wear and tear, alterations, improper installation, physical abuse, misuse or accidental damage. Any transportation costs involved in the repair of defective parts shall be borne by the claimant.

If proof of purchase cannot be provided at the time of a warranty claim or service, any work carried out on the cleaner is chargeable.

The repair or replacement of the cleaner under this warranty does not extend the original period of warranty.

The benefits conferred by this warranty are in addition to all other rights and remedies in respect of the product as outlined under the Competition and Consumer Act and other State and Territory laws.

"Our goods come with guarantees that cannot be excluded in the Australian Consumer Law. You are entitled to a replacement or refund for a major failure and for compensation for any other reasonably foreseeable loss or damage. You are also entitled to have the goods repaired or replaced if the goods fail to be of acceptable quality and the failure does not amount to a major failure."

Call Customer Service with any product queries

Australia 1800 815 270. New Zealand (09)263 7573.

To find out more about our range,
email: customerservice@godfreys.com.au

Commander	Electrical Home-Aids
Model: PV900	Aus: 1300 360 845
240V-50Hz	NZ: (09) 263 7573
Pmax: 1250W	
Pmax: 2050W (Including Power Socket)	
P/N: 11500179	S/N: YYWWXXXX
Design Registered and Patented	
DESIGNED IN AUSTRALIA	
Made in China to our exact specifications	



PROFESSIONAL COMMERCIAL CLEANING

V10 11/16